

TRAVEL WITH **B**

# GALÁPAGOS

WITH AN EXTENSION TO PERU

APRIL 14 23, 2023

*ABOARD NATIONAL GEOGRAPHIC ENDEAVOUR II*

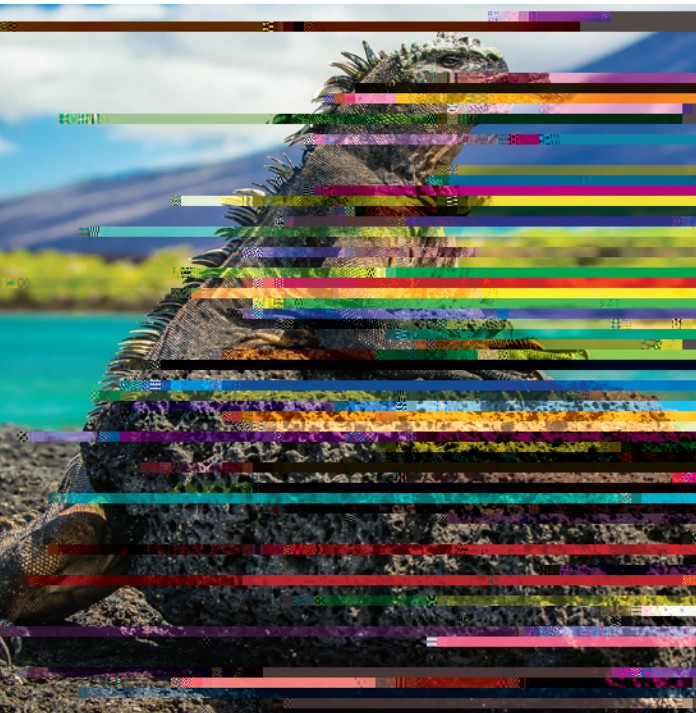
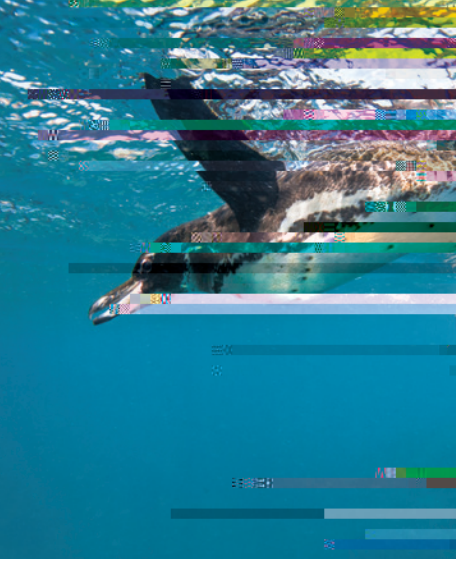


**Trust with confidence.** We encourage you to view the Health & Safety protocols currently in effect. Scan the QR code, or visit [bit.ly/3oBKEIQ](https://bit.ly/3oBKEIQ).









# GALÁPAGOS—WHERE NATURE & MAGIC MEET



The power and relevance of our needs as humans to connect with nature cannot be underestimated. That connection is perhaps at its greatest level in Galápagos. The vast number of animals living in the Galápagos archipelago is a major reason to travel to this remote part of the world.

Where else on the planet can you get close to the wildlife in the context of no fear at all? This is a marvelous experience for the human spirit and the itinerary ensures that you will have it often—exploring the key islands in the archipelago and seeing the iconic species that make this region so unique.

You'll come eye-to-eye with the famous giant tortoises roaming in the wild. Encounter blue-footed boobies nesting along a trail. Stand paces away from courting, red-throated frigatebirds. Watch your footing to avoid disturbing a sea lion lounging on a white sand beach. And swim with penguins, marine iguanas, and playful sea lions—experiences that can transform lives.

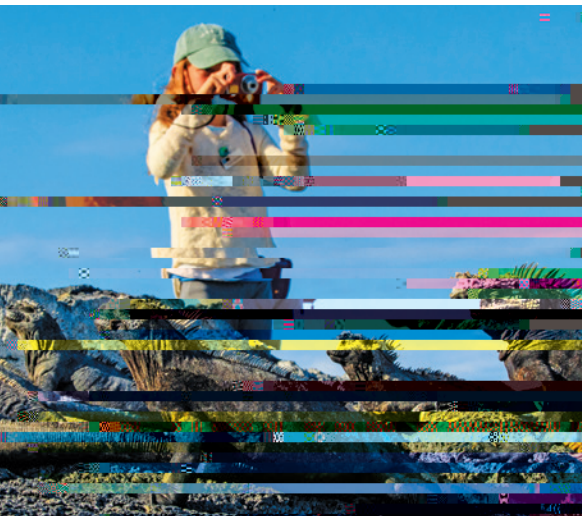
## EVERY DAY IS FILLED WITH ADVENTURE

This expedition is designed to optimize your individual experience of Galápagos. What would you like to do today? Which of the many activities on offer—from walks to more energetic hikes, to Zodiac shore cruises, to paddling adventures—suits your interests today? Our operation is geared to get you off the ship, out exploring and actively experiencing all the kaleidoscopic wonders Galápagos offers, from swimming with sea lions off a pristine arc of beach, to snorkeling with a passing flotilla of Pacific green sea turtles. Make it yours.



*0, 1, 2, 3, 4, 5, 6, 7, 8, 9, 10, 11, 12, 13, 14, 15, 16, 17, 18, 19, 20, 21, 22, 23, 24, 25, 26, 27, 28, 29, 30, 31, 32, 33, 34, 35, 36, 37, 38, 39, 40, 41, 42, 43, 44, 45, 46, 47, 48, 49, 50, 51, 52, 53, 54, 55, 56, 57, 58, 59, 60, 61, 62, 63, 64, 65, 66, 67, 68, 69, 70, 71, 72, 73, 74, 75, 76, 77, 78, 79, 80, 81, 82, 83, 84, 85, 86, 87, 88, 89, 90, 91, 92, 93, 94, 95, 96, 97, 98, 99, 100, 101, 102, 103, 104, 105, 106, 107, 108, 109, 110, 111, 112, 113, 114, 115, 116, 117, 118, 119, 120, 121, 122, 123, 124, 125, 126, 127, 128, 129, 130, 131, 132, 133, 134, 135, 136, 137, 138, 139, 140, 141, 142, 143, 144, 145, 146, 147, 148, 149, 150, 151, 152, 153, 154, 155, 156, 157, 158, 159, 160, 161, 162, 163, 164, 165, 166, 167, 168, 169, 170, 171, 172, 173, 174, 175, 176, 177, 178, 179, 180, 181, 182, 183, 184, 185, 186, 187, 188, 189, 190, 191, 192, 193, 194, 195, 196, 197, 198, 199, 200, 201, 202, 203, 204, 205, 206, 207, 208, 209, 210, 211, 212, 213, 214, 215, 216, 217, 218, 219, 220, 221, 222, 223, 224, 225, 226, 227, 228, 229, 230, 231, 232, 233, 234, 235, 236, 237, 238, 239, 240, 241, 242, 243, 244, 245, 246, 247, 248, 249, 250, 251, 252, 253, 254, 255, 256, 257, 258, 259, 260, 261, 262, 263, 264, 265, 266, 267, 268, 269, 270, 271, 272, 273, 274, 275, 276, 277, 278, 279, 280, 281, 282, 283, 284, 285, 286, 287, 288, 289, 290, 291, 292, 293, 294, 295, 296, 297, 298, 299, 300, 301, 302, 303, 304, 305, 306, 307, 308, 309, 310, 311, 312, 313, 314, 315, 316, 317, 318, 319, 320, 321, 322, 323, 324, 325, 326, 327, 328, 329, 330, 331, 332, 333, 334, 335, 336, 337, 338, 339, 340, 341, 342, 343, 344, 345, 346, 347, 348, 349, 350, 351, 352, 353, 354, 355, 356, 357, 358, 359, 360, 361, 362, 363, 364, 365, 366, 367, 368, 369, 370, 371, 372, 373, 374, 375, 376, 377, 378, 379, 380, 381, 382, 383, 384, 385, 386, 387, 388, 389, 390, 391, 392, 393, 394, 395, 396, 397, 398, 399, 400, 401, 402, 403, 404, 405, 406, 407, 408, 409, 410, 411, 412, 413, 414, 415, 416, 417, 418, 419, 420, 421, 422, 423, 424, 425, 426, 427, 428, 429, 430, 431, 432, 433, 434, 435, 436, 437, 438, 439, 440, 441, 442, 443, 444, 445, 446, 447, 448, 449, 450, 451, 452, 453, 454, 455, 456, 457, 458, 459, 460, 461, 462, 463, 464, 465, 466, 467, 468, 469, 470, 471, 472, 473, 474, 475, 476, 477, 478, 479, 480, 481, 482, 483, 484, 485, 486, 487, 488, 489, 490, 491, 492, 493, 494, 495, 496, 497, 498, 499, 500, 501, 502, 503, 504, 505, 506, 507, 508, 509, 510, 511, 512, 513, 514, 515, 516, 517, 518, 519, 520, 521, 522, 523, 524, 525, 526, 527, 528, 529, 530, 531, 532, 533, 534, 535, 536, 537, 538, 539, 540, 541, 542, 543, 544, 545, 546, 547, 548, 549, 550, 551, 552, 553, 554, 555, 556, 557, 558, 559, 560, 561, 562, 563, 564, 565, 566, 567, 568, 569, 570, 571, 572, 573, 574, 575, 576, 577, 578, 579, 580, 581, 582, 583, 584, 585, 586, 587, 588, 589, 590, 591, 592, 593, 594, 595, 596, 597, 598, 599, 600, 601, 602, 603, 604, 605, 606, 607, 608, 609, 610, 611, 612, 613, 614, 615, 616, 617, 618, 619, 620, 621, 622, 623, 624, 625, 626, 627, 628, 629, 630, 631, 632, 633, 634, 635, 636, 637, 638, 639, 640, 641, 642, 643, 644, 645, 646, 647, 648, 649, 650, 651, 652, 653, 654, 655, 656, 657, 658, 659, 660, 661, 662, 663, 664, 665, 666, 667, 668, 669, 670, 671, 672, 673, 674, 675, 676, 677, 678, 679, 680, 681, 682, 683, 684, 685, 686, 687, 688, 689, 690, 691, 692, 693, 694, 695, 696, 697, 698, 699, 700, 701, 702, 703, 704, 705, 706, 707, 708, 709, 710, 711, 712, 713, 714, 715, 716, 717, 718, 719, 720, 721, 722, 723, 724, 725, 726, 727, 728, 729, 730, 731, 732, 733, 734, 735, 736, 737, 738, 739, 740, 741, 742, 743, 744, 745, 746, 747, 748, 749, 750, 751, 752, 753, 754, 755, 756, 757, 758, 759, 760, 761, 762, 763, 764, 765, 766, 767, 768, 769, 770, 771, 772, 773, 774, 775, 776, 777, 778, 779, 780, 781, 782, 783, 784, 785, 786, 787, 788, 789, 790, 791, 792, 793, 794, 795, 796, 797, 798, 799, 800, 801, 802, 803, 804, 805, 806, 807, 808, 809, 810, 811, 812, 813, 814, 815, 816, 817, 818, 819, 820, 821, 822, 823, 824, 825, 826, 827, 828, 829, 830, 831, 832, 833, 834, 835, 836, 837, 838, 839, 840, 841, 842, 843, 844, 845, 846, 847, 848, 849, 850, 851, 852, 853, 854, 855, 856, 857, 858, 859, 860, 861, 862, 863, 864, 865, 866, 867, 868, 869, 870, 871, 872, 873, 874, 875, 876, 877, 878, 879, 880, 881, 882, 883, 884, 885, 886, 887, 888, 889, 890, 891, 892, 893, 894, 895, 896, 897, 898, 899, 900, 901, 902, 903, 904, 905, 906, 907, 908, 909, 910, 911, 912, 913, 914, 915, 916, 917, 918, 919, 920, 921, 922, 923, 924, 925, 926, 927, 928, 929, 930, 931, 932, 933, 934, 935, 936, 937, 938, 939, 940, 941, 942, 943, 944, 945, 946, 947, 948, 949, 950, 951, 952, 953, 954, 955, 956, 957, 958, 959, 960, 961, 962, 963, 964, 965, 966, 967, 968, 969, 970, 971, 972, 973, 974, 975, 976, 977, 978, 979, 980, 981, 982, 983, 984, 985, 986, 987, 988, 989, 990, 991, 992, 993, 994, 995, 996, 997, 998, 999, 1000.*











## FLOREANA

Land on an olivine green-tinted beach at Punta Cormorant, where albatrosses and shore birds feed in a shallow lagoon, and sea turtles nest on a beach across the peninsula. Snorkel among sea lions at Champion Islet. Later, paddleboard or kayak along the shore, and for those interested, you can visit Post Office Bay, founded by whalers in the 18th century.









## NATIONAL GEOGRAPHIC ENDEAVOUR II

Designed to meet exacting standards, *National Geographic Endeavour II* was launched in 2017. A beautiful ship, she is lavishly windowed to better frame the never-ending panorama as she voyages from island to island.

**CAPACITY:** 52 outside cabins accommodating 96 guests.

**REGISTRY:** Ecuador **OVERALL LENGTH:** 236 feet.

**PUBLIC AREAS:** Forward lounge and bar for presentations and gatherings, restaurant, large library with Mac computer kiosks, open-air observation deck, underwater gear area and efficient Zodiac boarding platform, and open Bridge, where guests are welcome to learn about navigation from the captain and officers.

**MEALS:** Served in a single, unassigned seating in a sociable, informal atmosphere. Menu emphasizes Ecuadorian air.

**CABINS:** All face outside with large windows and feature twin beds that convert to a queen. With private facilities, climate control, nightstands, desk, and storage. Seven sets of cabins with a connecting door and nine solo cabins.

**EXPEDITION EQUIPMENT:** Zodiacs, glass-bottom boat, kayaks, stand-up paddleboards, snorkel gear including wetsuits for adults and children, video microscope, and underwater video camera.

**SPECIAL FEATURES:** Ship's doctor, certified photo instructor, video chronicler, Global Explorers family program, first-aid instruction, Wi-Fi access, laundry service, breakfast, lunch, dinner, and beverages. 10 staterooms.

**WITH COMPLIMENTS, YOUR BAR TAB AND WI FI ARE INCLUDED.**

COSTS ARE PER PERSON DOUBLE OCCUPANCY UNLESS OTHERWISE NOTED.

**CATEGORY 1:** \$8,250

Upper Deck, Forward #201, 202

**CATEGORY 2:** \$9,660

Upper Deck #211, 213-219, 221, 222, 224-229

**CATEGORY 3:** \$10,770

Lounge Deck #311, 313-319, 321, 322, 324, 326, 328, 330

**CATEGORY 4:** \$12,000

Bridge Deck #409, 411-414, 416, 418

**SUITE A:** \$14,440

Lounge Deck, Mid-Ship #320—with two windows, bath, armchair. Connecting door to #322.

**SUITE B:** \$15,560

Bridge Deck, Mid-Ship #420, 422—with two door-to-ceiling windows, larger bath, convertible sofa for a third person.

**SUITE C:** \$16,370

Bridge Deck, Mid-Ship #415—with two large windows, larger bath, separate sitting area with convertible sofa for a third person and armchairs, largest cabin on ship

**CATEGORY 2 SOLO:** \$12,230

Upper Deck #203-209

**CATEGORY 3 SOLO:** \$13,550

Lounge Deck #325, 327

NOTE: All cabins feature the option of two singles or a queen bed, plus large window(s), desk, chair, and

CONNECTING CABINS: #226/228, 227/229, 315/317, 316/318, 320/322, 411/413, 416/418

TRIPLE OCCUPANCY: #224, 225, 326, 328 with fold-down third berth, Suites B and C with convertible sofa. Third person rates are one-half per person double occupancy rate

SHARED ACCOMMODATIONS: Shares can be arranged at the double occupancy rate in Categories 1-4







Please return to:  
Lindblad Expeditions  
96 Merton Street  
New York, NY 10014  
Ph: (888) 773-9007  
Fax: (646) 390-2050  
Email: groups@expeditions.com

## RESERVATION FORM GALÁPAGOS/PERU

ABOARD NATIONAL GEOGRAPHIC ENDEAVOUR II

GAL PAGOS: APRIL 14 23, 2023 GAL PAGOS + PERU: APRIL 14 29, 2023

Please reserve \_\_\_\_\_ place(s) on Galápagos, Galápagos + Peru.

Name 1: \_\_\_\_\_

*(Last, first, middle, initial)*

Name 1: \_\_\_\_\_

Date of Birth: \_\_\_\_\_

*(Month, day, year)*

Name 2: \_\_\_\_\_

*(Last, first, middle, initial)*

Name 2: \_\_\_\_\_

Date of Birth: \_\_\_\_\_

*(Month, day, year)*

Street Address: \_\_\_\_\_

City: \_\_\_\_\_

State: \_\_\_\_\_

Zip: \_\_\_\_\_

Home Phone: \_\_\_\_\_

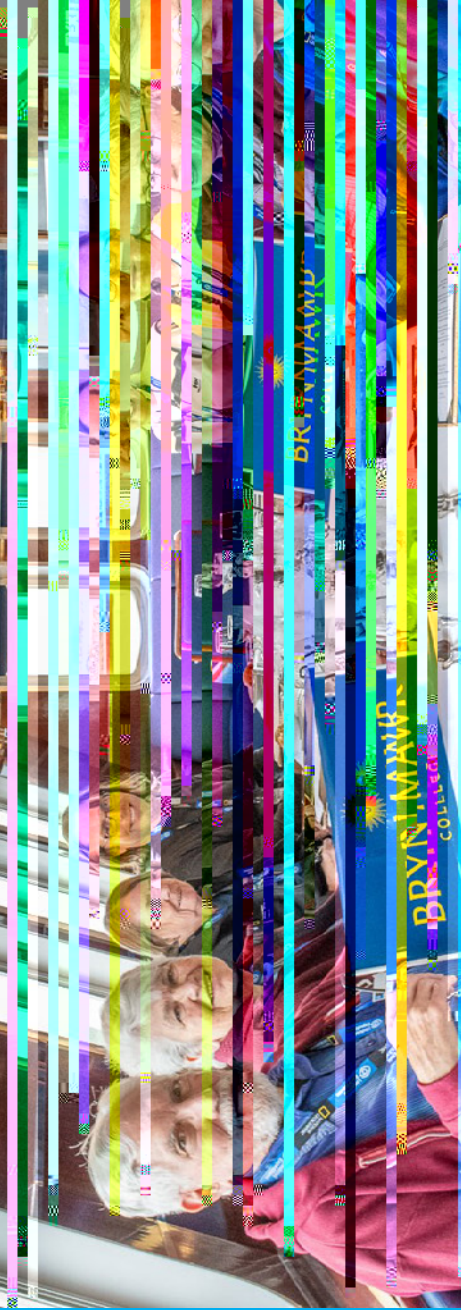
Cell Phone: \_\_\_\_\_

Business Phone: \_\_\_\_\_

Fax: \_\_\_\_\_

Email: \_\_\_\_\_

Accommodations: Double „ Single „



TRAVEL WITH  
 BRYN M